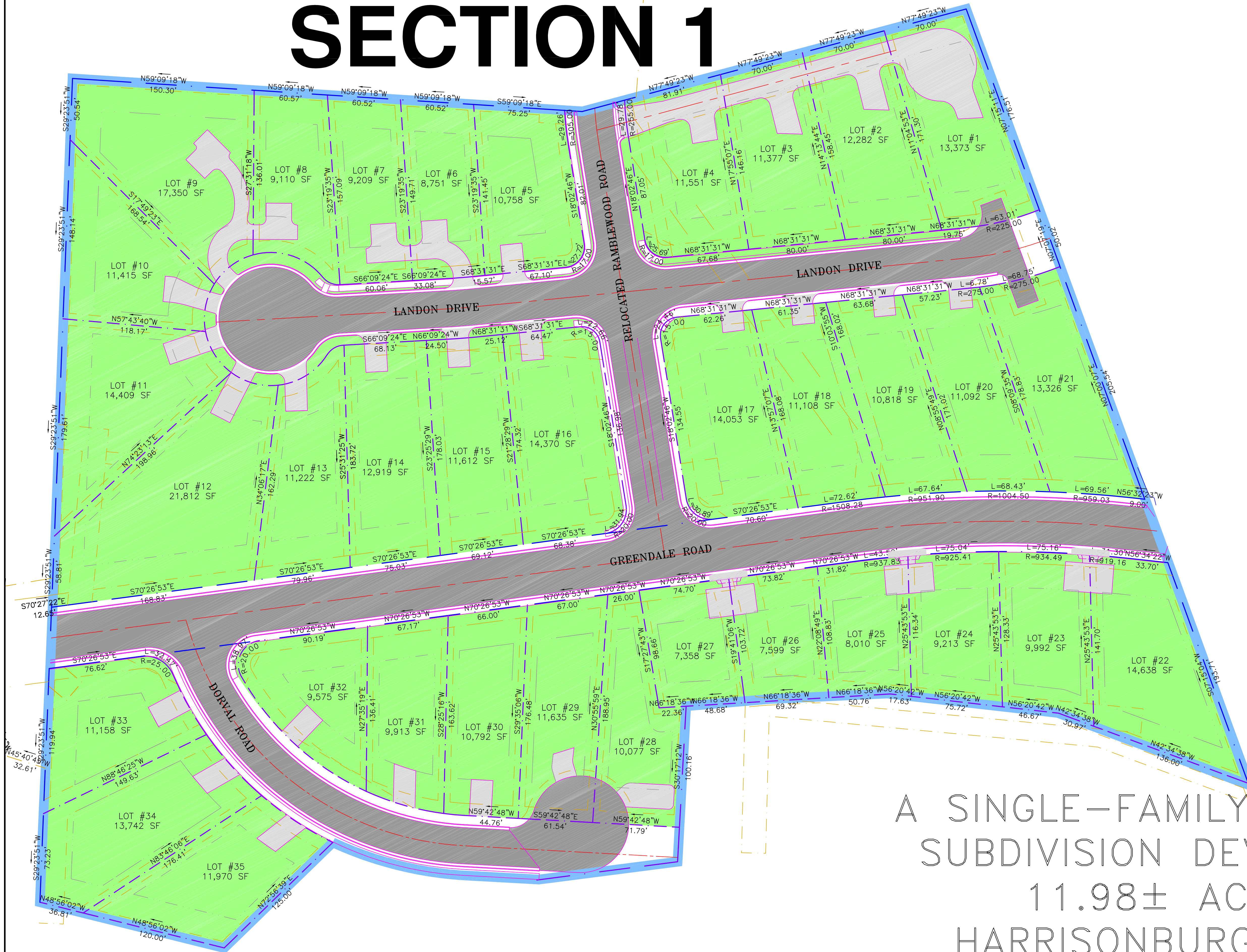


THE CROSSINGS SECTION 1



A SINGLE-FAMILY RESIDENTIAL
SUBDIVISION DEVELOPED ON
11.98± ACRES IN
HARRISONBURG, VIRGINIA
TM: 97-B-5,6, ZONING: R2-C

Date: JAN 4, 2008
Scale: 1" = 40'
Designed by: ALS
Drawn by: ALS
Checked by: RLB JR

BLACKWELL ENGINEERING, PLC
566 East Market Street
Harrisonburg, Virginia 22801
PHONE: (540) 532-9555 FAX: (540) 434-7604
E-Mail: B@blackwellengineering.com



COMMONWEALTH OF VIRGINIA
RICHARD L. BLACKWELL, JR.
NO. 005742
PROFESSIONAL ENGINEER

Revision Dates

MARKETING PLAN
THE CROSSINGS
KEITH MAY & ERIC ADAMSON
1960 EVELYN BYRD AVENUE
HARRISONBURG, VA 22801

Drawing No.
1
of 1 Sheets

Job No. 1491