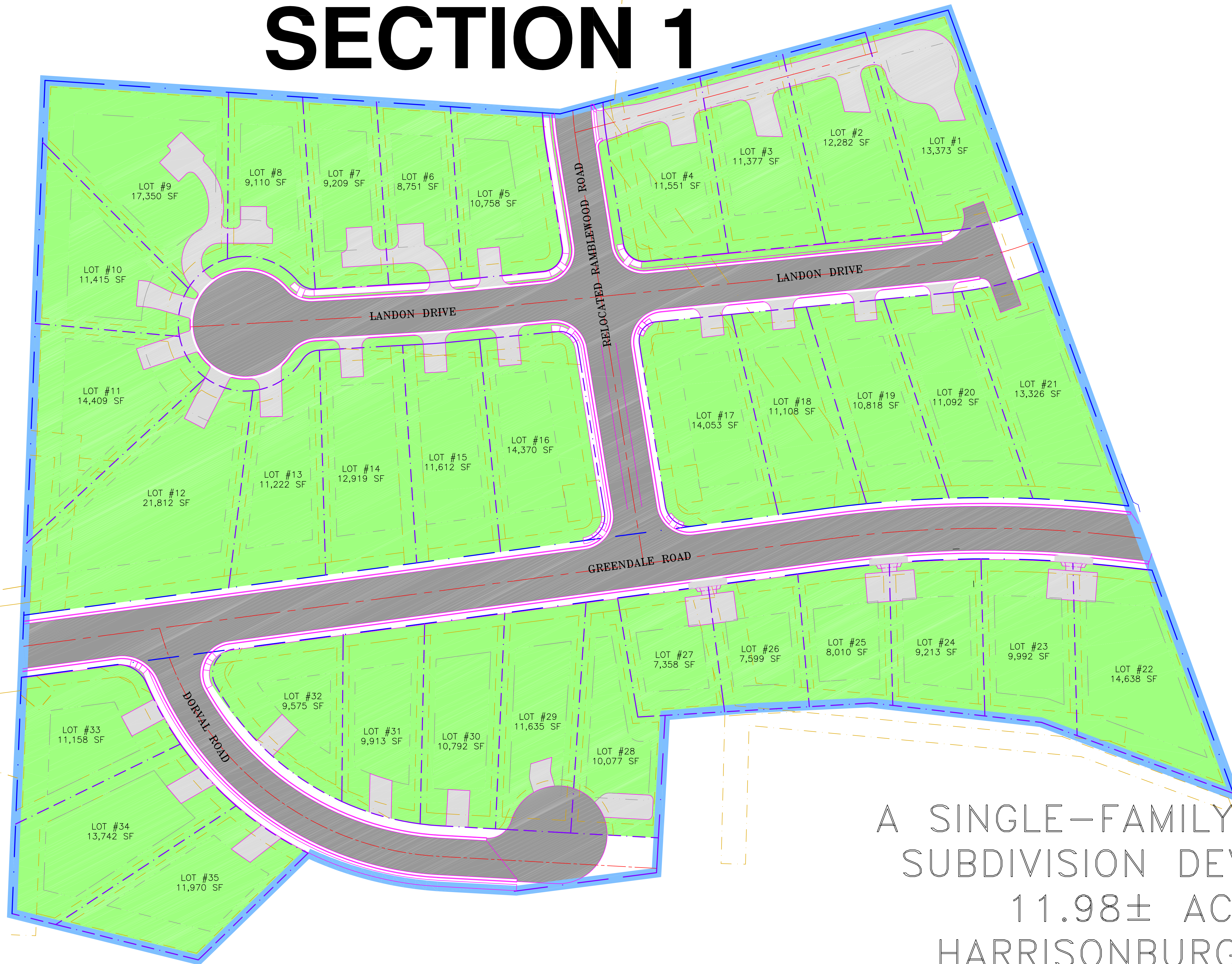


THE CROSSINGS

SECTION 1



A SINGLE-FAMILY RESIDENTIAL
 SUBDIVISION DEVELOPED ON
 11.98± ACRES IN
 HARRISONBURG, VIRGINIA
 TM: 97-B-5,6, ZONING: R2-C

Date: JAN 4, 2008
 Scale: 1" = 40'
 Designed by: ALS
 Drawn by: ALS
 Checked by: RLB JR

BLACKWELL ENGINEERING, PLC
 566 East Market Street
 Harrisonburg, Virginia 22801
 PHONE: (540)322-9555 FAX: (540)344-7604
 E-Mail: B@blackwellengineering.com




Revision Dates

MARKETING PLAN
 THE CROSSINGS
 KEITH MAY & ERIC ADAMSON
 1960 EVELYN BYRD AVENUE
 HARRISONBURG, VA 22801

Drawing No.
1
 of 1 Sheets

Job No. 1491